

The background of the image shows the interior of a large water treatment plant. A worker in a hard hat and safety vest stands on a yellow metal walkway overlooking a large circular tank. The tank is filled with water and has a large red mechanical structure mounted on top. The facility has high ceilings with industrial lighting and large windows in the background.

EPCOR Water Services

2025 CEA
Partnering with Industry
Symposium

January 23, 2025

Agenda

- Overview of EPCOR
- Overview of EPCOR Water Services (EWS)
- EWS Org Structure
- EWS Capital Budget
- Procurement





catchbasins
64,038

22,757
fire hydrants



Wastewater
Treatment
Plant

1



288ML
of wastewater
treated daily

89,997
Manholes

3,762KM
of sanitary pipes

2

Water
Treatment
Plants

4,291KM
of water
main lines

service connections

272,467 water
247,139 wastewater
181,920 stormwater

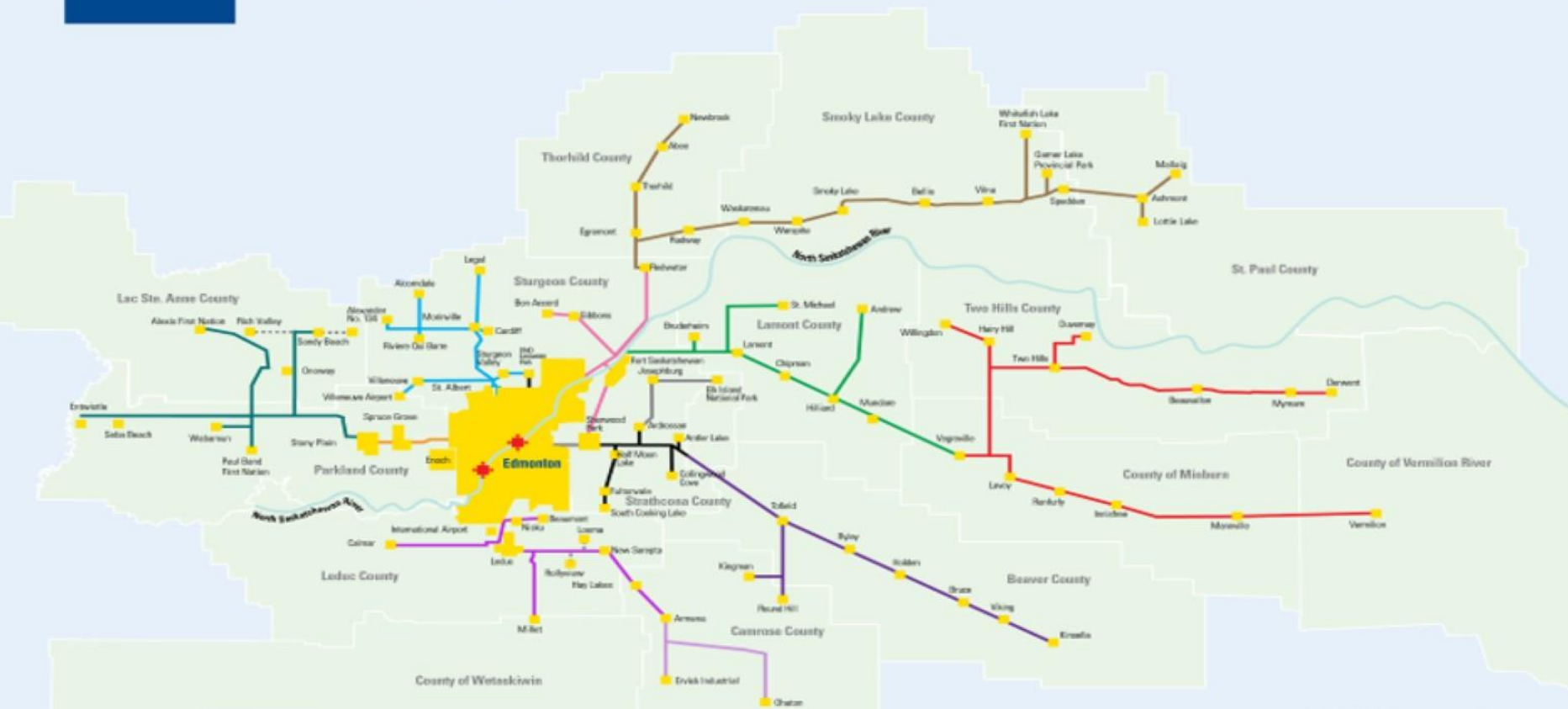


330
Stormwater
Management Facilities

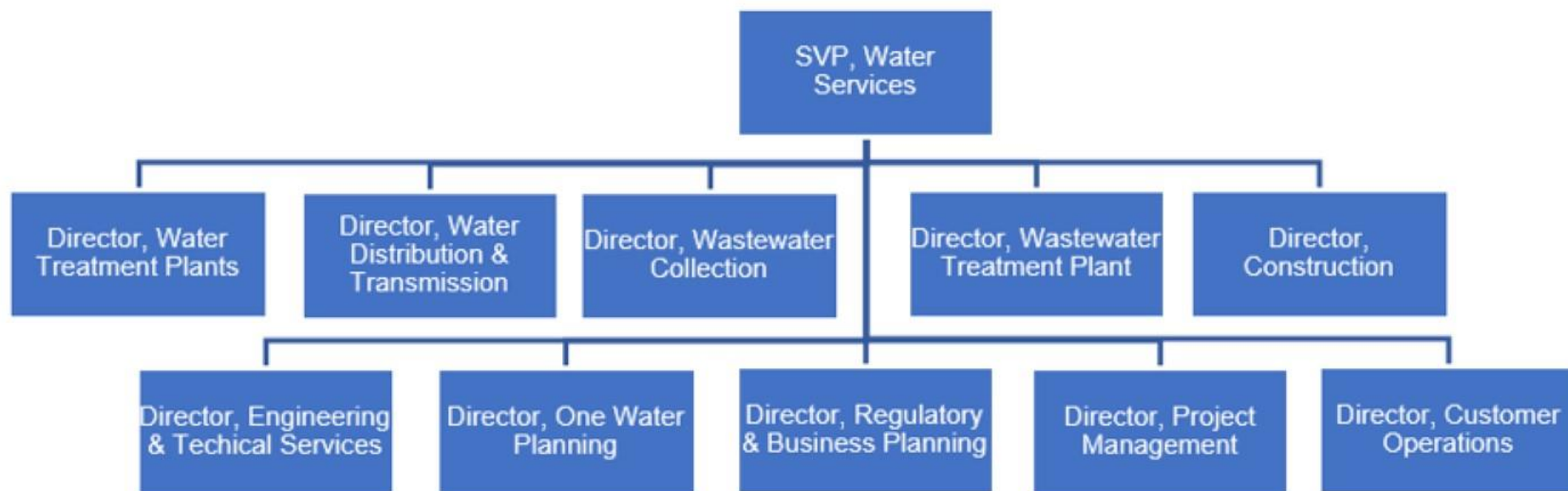
375ML
water treated
daily



EDMONTON REGION WATER SERVICE AREA

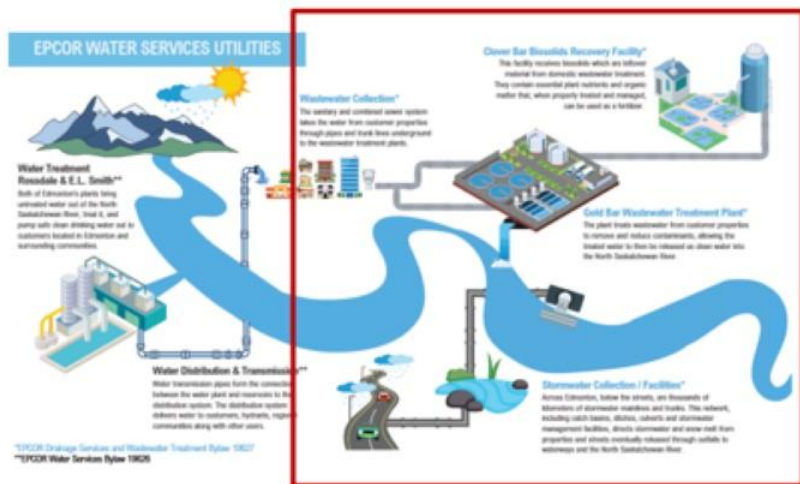


EPCOR Water Services Leadership

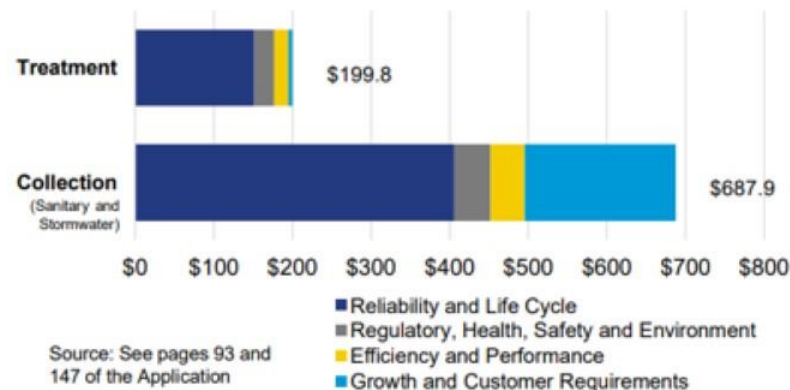


2025-2027 PBR

EPCOR Wastewater Treatment and Collection Utilities



Forecast Capital Expenditures (2025-27, \$millions)



Utility Functions

Capital Expenditures

Water Distribution & Transmission

Significant Projects:

- Usually projects are done in-house
- May have some special requirement for engaging consultants





Water Treatment Plants

Significant Projects:

- Most of the significant projects are in construction phase

Wastewater Collection

Significant Projects:

- Rossdale Dry Pond Project
- Kensington Dry Pond Project
- Alberta Avenue Dry Pond Project
- Newton Dry Pond Project
- Smart Ponds Project



Wastewater Treatment Plant

Significant Projects:

- Potable Water Upgrades – Phase 2
- Maintenance Workspace & Storage
- inDENSE Secondary 3
- Biogas Utilization & Upgrades



Procurement

- Combination of multi-year MSA's and individual tenders
- All tenders for new MSA's and tenders go through Bids & Tenders
- We have an Indigenous Procurement Strategy



A large green square is positioned on the left side of the image, partially overlapping the beer bottles. Inside this square, the word "Questions?" is written in white, bold, sans-serif font. A thin white horizontal line is located below the text. The background of the entire image is a blurred bar setting with several condensation-covered beer bottles on a wooden bar top. The bottles have labels that partially read "GLASS OF THE SASKATCHEWAN" and "MADE IN EDMONTON BY EPCOR".

Questions?